



FH JOANNEUM (FHJ) – Coordinating Institution

RF partners:

- Perm National Research Polytechnic University (PNRPU)
- Saint-Petersburg State Polytechnic University (SPbPU)
- Chelyabinsk, South-Urals State University (SUSU)
- National Research Tomsk Polytechnic University (TPU)
- “Aviadvigatel” Public Corporation (Aviad)
- Association of Technical Universities of RF

EU partners:

- AALTO University (Finland)
- FH Reutlingen (Germany)
- TCM International Tool Consulting & Management GmbH (Austria)

Contacts:

Dr. R. Beinhauer
FH Joanneum Gesellschaft mbH
International Management
Eggenberger Allee 11
8020 Graz, Austria
Office: 0316 5453 6822
Rupert.beinhauer@fh-joanneum.at



The SUCCESS project is co-funded by the European Union in scope of the Tempus programme.

"This project has been funded with support from the European Commission. This publication reflects the views only of the author, and the Commission cannot be held responsible for any use which may be made of the information contained therein."



Handout

**Central European Joint Infoday
on Centralised Actions**
Cooperation with Partner Countries in the
Erasmus+ Programme

26th – 27th November 2015
Bratislava, Slovakia

SUCCESS - ENSURING OF PRODUCT LIFE CYCLE TECHNOLOGICAL PROCESSES EFFICIENCY

Project Goals

Much has been talked about Industry 4.0. All over the world companies have started to work on modular, networked machines, which can connect and communicate with each other, exchanging information and forming complex systems, which are more than the sum of their parts.

Four leading higher education institutions in the Russian Federation have realized the potential of this idea for study programs and formed a project consortium together with industry and universities from the European Union, to realize an ambitious project: Transferring the main ideas of industry 4.0 to education.



Key Aims

- Create a new MA course with an innovative content in four leading RF universities.
- Prepare a competence based curriculum
 - ... which is complying with RF standards
 - ... and is readable for national and international partners
 - ... that is actually lived and used.

- Total student intake of about 50 / semester (in all four universities)

... Start with first cohort inside the project running time

... Already started in 3 RF universities

- Guarantee up to date output oriented, student centred teaching processes

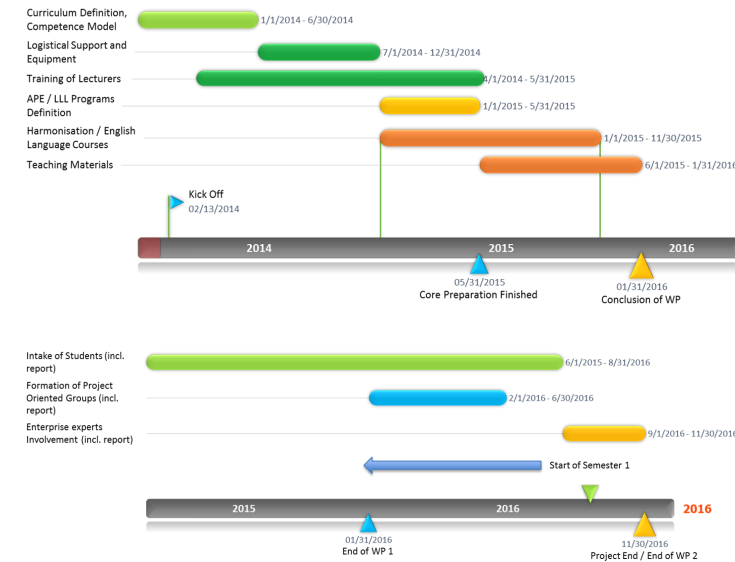
... Networked 3rd semester

... Trained lecturers

... Connected with industry

... English language courses

Workplan



Roles

